

Integrated Service Delivery

June 26, 2018



Transforming MHA and support services

- Integrated Service Delivery for young people ages 0 to 25 is an overarching goal of Towards Recovery Action Plan and includes recommendations 3 and 46
 - Create regional interdisciplinary teams, reporting to the regional health authorities, to provide timely mental health and addictions assessment and treatment for students in schools.
 - Establish standards for youth transitioning into adulthood (16-25 years old) that include a requirement for collaboration and evidence-based practices so that programs and services are geared to young people's needs wherever they live

Work done to date



- Working group formed
- Literature review
- Comparative Analysis of existing models
- Connecting to a network of ISD experts
- Site visits
- Feedback on this presentation from working group and MHA division

Current focus



of the work

- Developing an Integrated Service Delivery model for youth and emerging adults ages 12 to 25
- Work on a model for younger children will come later

Why use an ISD approach?

- Clear message in the All Party consultations that we need to change the way services are currently provided to this population. Working in silos as we often do now does not work.
- Evidence from existing ISD models shows that youth respond well to an integrated approach to service delivery and there are promising outcomes for both symptomatic and functional recovery.
- Data shows that many youth who would not otherwise have accessed services are using these services.

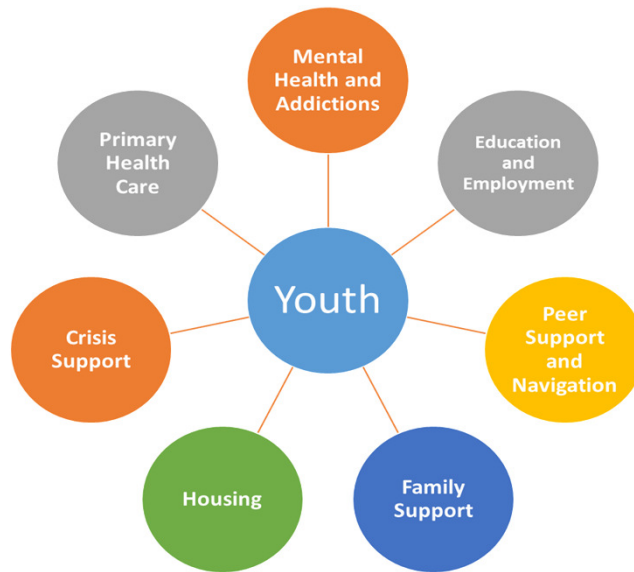


Defining Integrated Services

- Services that address the needs of young people through multidisciplinary collaboration across care providers, services and sectors (McGorry, Tanti, Stokes et al, 2007)
- One stop shop, walk in services
- Address youth needs across multiple domains of their lives
- Tied to a stepped care approach in which service intensity is tailored to youth need

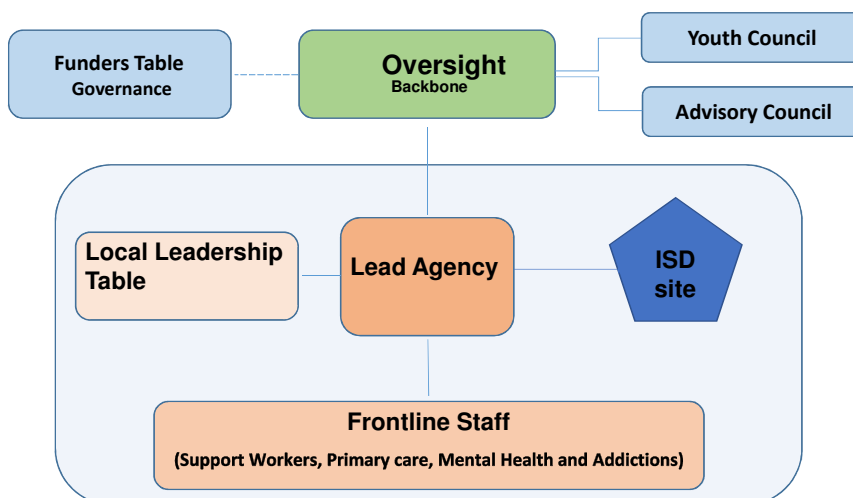


Core Services

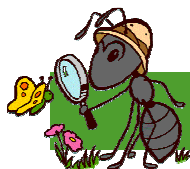
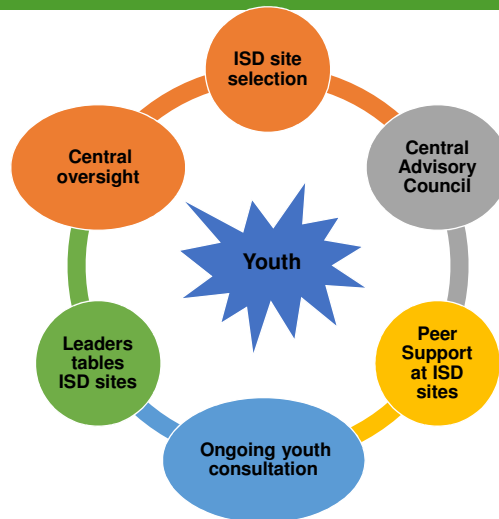


Model - Draft

Integrated Service Delivery



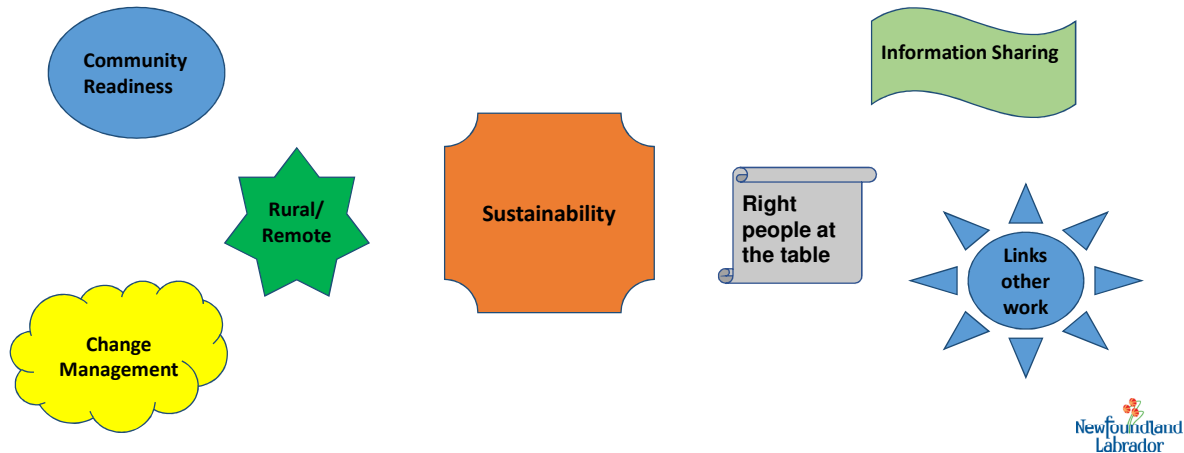
Meaningful Youth Engagement



Vision and Values

- A province where youth and emerging adults have timely access to and receive services they require to help them reach their potential to live healthy and productive lives as defined by youth themselves.
- Respectful, Person-centered, Accessible, Recovery-Focused, Collaborative, Effective/Efficient, Responsive, Inclusive/**Diversity, Equitable Trauma-informed**

Planning Considerations



Next Steps



- Complete Initial draft of ISD Model
- Get feedback from appropriate groups
- Finalize ISD model with budget and timelines
- Seek necessary Towards Recovery/Government approvals
- Establish Central Oversight group

Questions/Comments

